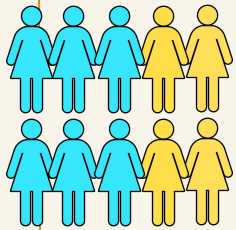


FACT SHEET

Domestic Violence and Suicide: A Dual Crisis For Alaska Natives



More than
6 in 10
Alaska Native women

experience intimate partner violence (IPV) or sexual violence (SV) in their lifetime.

Alaska Victimization Survey (2010-2015)

More than **1 in 10 Alaska Native men** experience IPV or SV in their lifetime.

Alaska Behavioral Risk Factor Surveillance System (2020)

2.5x

Suicide

was the 4th leading cause of death for Alaska Natives.

The rate of Alaska Natives who died by suicide was more than **2.5 times** the rate of all other races in Alaska.

Alaska Vital Statistics Annual Report (2022)

Women exposed to intimate partner domestic violence

5x

are nearly **5 times** more likely to attempt suicide than women who are not.

Centers for Disease Control (2017)

At least one study found that **36%** of female domestic violence survivors considered suicide and **23%** attempted suicide.

Kaslow, et. al. (2013)

“Intimate partner problem” was indicated as a precipitating factor in **25.66%** of suicides with known circumstances.

Stanley, et. al. (2019)

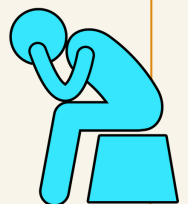
Those who use violence

may threaten suicide to exert power and control over their partners. **22%** of female Alaska Native IPV survivors reported their partner threatened suicide.

Alaska Victimization Survey (2010-2015)

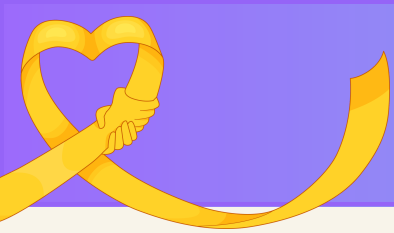
They are also at higher risk for dying by suicide. A recent study of state-level data found that most IPV-related suicides were among male perpetrators of IPV.

Kafka, et. al. (2022)



Alaska Native Women's Resource Center
P.O. Box 80382
Fairbanks, AK 99708
907-328-3990
www.aknwr.org





DOMESTIC VIOLENCE AND SUICIDE FACT SHEET

Know the Warning Signs for Suicide

Warning signs may help you determine if someone you know is at risk for suicide, especially if the behavior is new, has increased, or seems related to a painful event, loss, or change.

- Talking about wanting to die or to kill themselves
- Looking for a way to kill themselves, like searching online or buying a gun
- Talking about feeling hopeless or having no reason to live
- Talking about feeling trapped or in unbearable pain
- Talking about being a burden to others
- Increasing the use of alcohol or drugs
- Acting anxious or agitated; behaving recklessly
- Sleeping too little or too much
- Withdrawing or isolating themselves
- Showing rage or talking about seeking revenge
- Extreme mood swings



We can all help prevent suicide. The 988 Lifeline provides 24/7, free, and confidential support for people in distress, prevention and crisis resources for you or your loved ones, and best practices for professionals.



**DIAL
988**

CALL, TEXT, or CHAT

References

Intimate Partner Violence in Alaska: Adult Female Victimization, (2010-2015). Intimate Partner Violence Dashboard, Alaska's Council on Domestic Violence and Sexual Assault and the University of Alaska, Anchorage, Alaska Justice Information Center. <https://public.tableau.com/app/profile/ajic.uaa/viz/AVSDashboard-CDVSA-AJIC/Introduction>

Prevalence of 'lifetime physical intimate partner violence' by sex among Alaska Native/American Indian adults in Alaska, (2020). Alaska Behavioral Risk Factor Surveillance System, Alaska Department of Health, Division of Public Health, Section of Chronic Disease Prevention and Health Promotion. <https://alaska-dph.shinyapps.io/BRFFS/>

Alaska Vital Statistics Annual Report, (2022). Alaska Department of Health, Division of Public Health, Health Analytics and Vital Records. [https://health.alaska.gov/dph/VitalStats/Documents/PDFs/VitalStatistics Annualreport 2022.pdf](https://health.alaska.gov/dph/VitalStats/Documents/PDFs/VitalStatistics%20AnnualReport%202022.pdf)

Niolon, P. H., Kearns, M., Dills, J., Rambo, K., Irving, S., Armstead, T., & Gilbert, L. (2017). Preventing Intimate Partner Violence Across the Lifespan: A Technical Package of Programs, Policies, and Practices. Atlanta, GA: National Center for Injury Prevention and Control, Centers for Disease Control and Prevention. <https://stacks.cdc.gov/view/cdc/45820>

Nadine Kaslow, Marylouise Kelley and Carole Warshaw, Suicide Prevention Resource Center, Research Highlights Series: Intimate Partner Violence and Suicide Webinar (Sept. 27, 2013). <https://sprc.org/event-training/research-highlights-series-suicide-intimate-partner-violence/>

Stanley AR, Aguilar T, Holland KM, Orpinas P. Precipitating Circumstances Associated With Intimate Partner Problem-Related Suicides. American Journal of Preventive Medicine. 2023 Sep;65(3):385-394. <https://doi.org/10.1016/j.amepre.2023.03.011>

Julie M. Kafka, Kathryn (Beth) E. Moracco, Caroline Taheri, Belinda-Rose Young, Laurie M. Graham, Rebecca J. Macy, Scott Proescholdbell. Intimate partner violence victimization and perpetration as precursors to suicide. SSM-Population Health. Volume 18, 2022, 101079, ISSN 2352-8273, <https://doi.org/10.1016/j.ssmph.2022.101079>

This publication was made possible by Grant #90-EV-045401-00 from the Administration on Children, Youth, and Families, Family and Youth Services Bureau, U.S. Department of Health and Human Services. Its contents are solely the responsibility of the author(s) and do not necessarily represent the official views of the U.S. Department of Health and Human Services.

